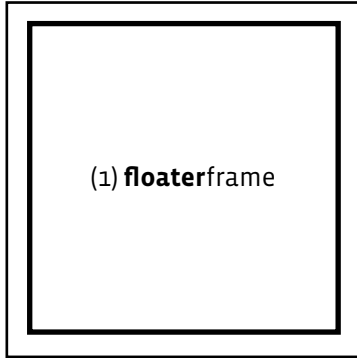


Thank you for choosing the Ampersand **floatersframe** - the easiest and most complete solution to framing your artwork! **floatersframe** is the only do-it-yourself frame specifically designed for wood panels and can also be used for stretched canvas. Made with premium hardwood, **floatersframe** is the perfect depth to protect your artwork. Its expanded drill base is precisely engineered to eliminate damage to the cradle frame or stretcher bar. Pre-drilled countersunk holes and the included bumper pads ensure your art hangs level against the wall, giving it a professional finished appearance. Even flat panels can be framed with our handy riser system (included only in 7/8" bold and thin frames).

Everything you need to frame and hang your artwork is included:



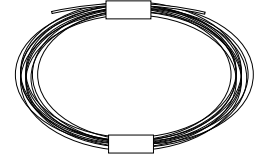
(4) fast wood screws



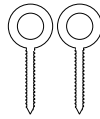
(1) hanging hook



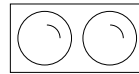
(1) nail for hanging hook



(1) 20 lb. hanging wire

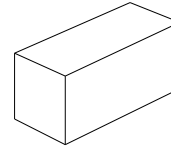


(2) small screw eyes

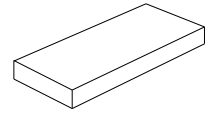


(2) bumper pads

For framing **flat panels** and 3/4" panels and canvas



(4) flat panel risers



(4) risers for 3/4" panels and canvas

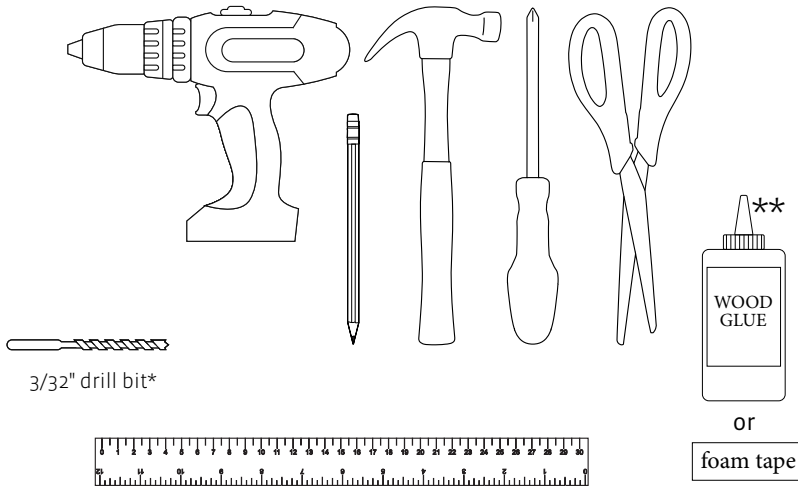
(included only in 7/8" deep bold and thin frames)



At Ampersand we take great pride in manufacturing to the highest quality standards. If you are missing any parts or for any reason your frame is defective, please call us at 800.822.1939 or email us at bords@ampersandart.com and we will gladly make things right.

For more detailed instructions, as well as more information on the **floatersframe**, please visit <http://ampersandart.com/floatersframe>

You Will Need:

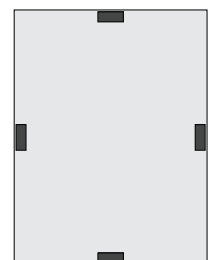


- Electric Drill
- 3/32" Drill bit (*recommended**)
* Drill bit size is recommended only. Other thin bits will work to drill pilot holes for screw eyes.
- Phillips screwdriver
- Ruler
- Scissors or wire cutters to trim hanging wire
- Pencil
- Clean soft towel or fabric (*larger than the artwork and frame*)
- Clean, flat work area
- Spacers to keep artwork centered in the frame while attaching with screws. Re-using cardboard pieces from the packaging works very well. Cut 1 1/2" x 2" pieces and fold lengthwise. Foam core or mat board can also be used.
- ** Wood Glue or heavy-duty double-sided Foam Tape for framing flat panels and 3/4" panels and canvas.

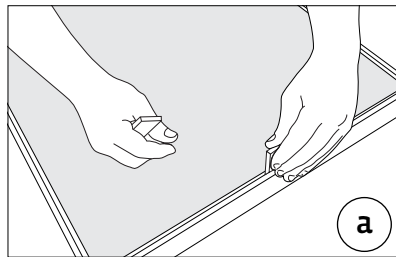
FOLLOW THIS STEP FIRST IF YOU ARE FRAMING "FLAT PANELS" AND 3/4" PROFILE ARTWORK

Ampersand's Floater Frames are designed for 7/8" and 1 1/2" profile panels and canvas. **The 7/8" profile can also be used for Flat Panels and 3/4" profile artwork by attaching the included RISERS to your artwork (risers are included only in the 7/8" bold and thin frames).**

1. Turn your artwork over, making sure to protect it. Position the RISER in the center of each back side, slightly inside the edge of the panel or the artwork as shown.
2. Use heavy-duty double-sided foam tape or wood glue to attach the riser to the panel or canvas. **VERY IMPORTANT - The risers have different heights** - Make sure you use the same height on all 4 sides. For 3/8" thick flat panels use the highest side (19mm high), for 1/4" thick flat panels use the slightly smaller side (15mm), and for 3/4" canvas use the thin riser.
3. If you are using glue, let it completely dry. Make sure that the riser is securely attached to your artwork. Now proceed to Step 1 on the opposite side of the page to attach your artwork to the frame.



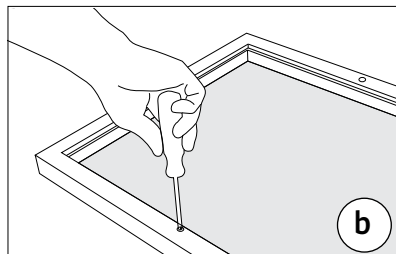
Assembly Steps for Attaching Artwork to Frame



NOTE: For framing flat panels and ¾" profile artwork, begin with the first step at the bottom of the opposite page. Use only 7/8" deep frames for flat panels.

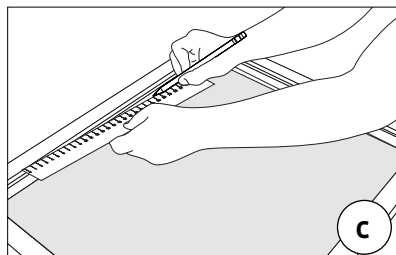
1. Prepare your workspace

In a clean, well-lit area, place a towel or soft cloth over your work table. This will protect your artwork and the frame from damage during assembly.

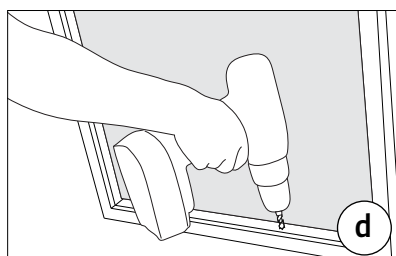


2. Attach the artwork to the frame

(a) Position your artwork into the frame. With the frame and artwork face up, center and wedge spacers* in on all four sides to temporarily keep your artwork centered and securely held in place. Be sure that the spacers do not sit higher than the top of the frame so your artwork lays flat when turned face down. (*Anything that can be used on all four sides to hold the artwork centered while you attach the frame. Re-using cardboard pieces from the packaging works very well. Cut 1 ½" x 2" pieces and fold lengthwise. Foam core or mat board can also be used). **IT IS EXTREMELY IMPORTANT THAT YOUR ARTWORK IS SECURED TIGHTLY IN PLACE BEFORE SECURING IT TO THE FRAME WITH THE INCLUDED FAST SCREWS (b). IF NOT, YOUR ARTWORK MAY SHIFT AS PRESSURE IS APPLIED.**



(b) Use a Phillips head screwdriver to tighten the included fast screws through the predrilled holes on the frame into the cradle of your artwork. Using a drill or electric screwdriver will make this step easier, but please use caution not to overtighten!

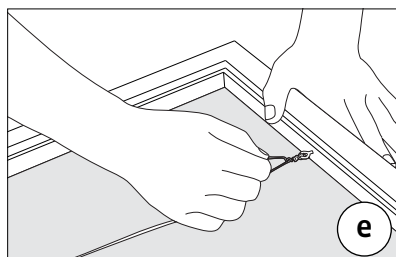


3. Attach the hanging wire

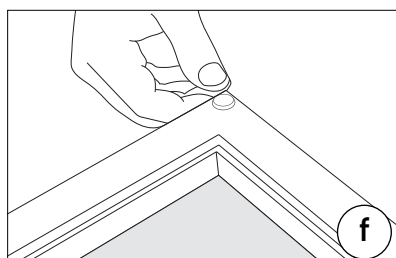
(c) With your artwork face down, use a ruler to measure the placement of the screw-eyes on the back inside edge of your artwork. This measurement is generally about ⅓ of the way down from the frame top. Mark this position with a pencil (see illustration).

Repeat on the opposite side.

(d) Use a ⅜" (or similar) drill bit to drill guide holes at your measured positions about ¼" into your artwork's cradle or stretcher bar.



(e) Push and twist the screw eyes completely into the guide holes until they are completely tight. Attach the included hanging wire to the screw-eyes. Use scissors or wire cutters to trim any excess wire.



4. Finish and hang your artwork

(f) Peel the backing off of the included adhesive bumpers and position them onto the back bottom corners of the floaterframe.

Determine the placement of your framed artwork on a wall and use the enclosed hook and nail to hang your artwork from the attached hanging wire.

If you have any issues, challenges, or suggestions please feel encouraged to call us at (800) 822-1939

If you really loved how easy it was to frame your artwork with our floaterframes, we would greatly appreciate you sharing it with the world!

Connect with us on social media at

<http://ampersandart.com/connect>